

⚠️ WARNING

To reduce the risk of drowning, entrapment, falls, paralysis, electrocution, or other serious injury or death:

Dealer/Installer: Give manual to homeowner.

Installer: Read "**Safe Installation**" on next page and all instructions before beginning. For proper assembly and installation, instructions must be followed completely.

Homeowner: Read "**Safe Use**" in #7200 ladder instructions before using. Gate must be latched at all times. Secure gate with padlock when not in use. Save these instructions.

Installation must comply with local codes and may require permits.

#7200-G GATE INSTRUCTIONS - FOR USE WITH #7200 LADDER

**Ladder must be attached to pool frame -
not for use on soft-sided/inflatable pools.**

ASSEMBLY, INSTALLATION AND USE MANUAL

Assembly video available online: www.conferplastics.com



**Scan to
see our
Installation
Videos**



Made in the U.S.A. by

CONFER
plastics inc.

Model #7200-G Gate for 7200 Ladder

7200 LADDER MUST BE ASSEMBLED AND ATTACHED TO POOL BEFORE GATE IS ATTACHED. SLIDE ROLL-GUARD TO INSIDE

If missing parts call - Toll free U.S./Canada - 800-635-3213 or www.conferplastics.com

PARTS:	1-GATE	5- 1/4-20 X 2- 1/4" BOLTS	1 - PADLOCK
	2-HINGE BRACKET	5- 1/4-20 HEX NUT	1 - #10 x 1-1/4" SCREW
	1-LATCH	5- 1/4" WASHERS	
	1-LATCH PLATE	1 -1/4-20 PLASTIC ACORN NUT	

TOOLS REQUIRED: CORDLESS DRILL, 5/16" DRILL BIT, 1/8" DRILL BIT, PHILLIPS SCREWDRIVER, 9/16" OPEN END WRENCH

NOTE: 7200 LADDER MUST BE ASSEMBLED AND ATTACHED TO POOL BEFORE GATE IS ATTACHED. SLIDE ROLLGUARD® TO INSIDE

Safe Installation

⚠ WARNING

To reduce the risk of electrocution, drowning, entrapment, falls, or other serious injury or death:

Check building codes/permitting. Consult your local Building Department before installation of your pool and equipment. Pool/equipment installation must comply with the codes of the authority having jurisdiction and may require permits (e.g., building, plumbing, electrical, zoning, etc.).

Use for intended purpose only

- Use only as a gate for the #7200 swimming pool ladder.

Check that you have all required parts. Check the contents of the carton with the Parts List for this ladder. All parts and hardware are required. If any parts are missing, **DO NOT attempt to assemble or install the gate.** Instead, call Toll Free U.S. - 800-635-3213 or visit our web site at www.conferplastics.com for assistance.

Select an appropriate location - The ladder must be located on a level, solid base and in a location that will be in full view of competent adult supervision when in use.

Follow all instructions

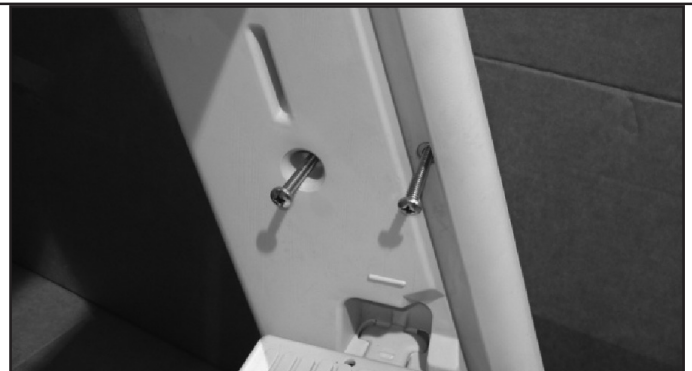
- For stable, correct assembly and installation, all instructions must be followed completely and in the sequence shown.
- Follow the manufacturer's recommendations for the safe use of all hand tools and equipment used during installation.

Cordless drill only - no corded drills near pool. Use a cordless drill for assembly and installation. To reduce the risk of electrocution, NEVER use a corded drill in or around a pool.

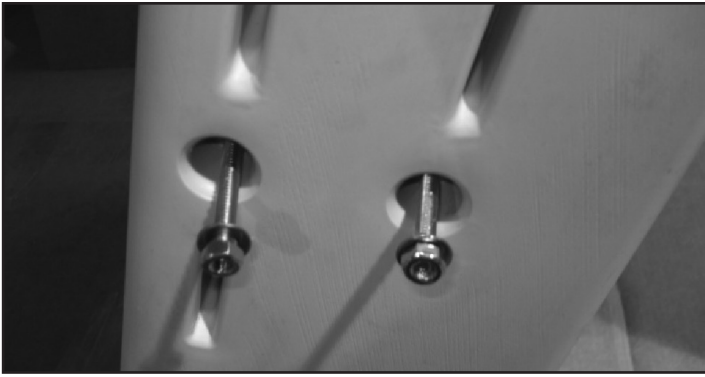
Lift safely. When lifting awkward or heavy loads, have another person help you.

Double check after installation

- Before using the product, after assembly and installation, go over the instructions and procedures again to make sure nothing has been overlooked.
- Make sure that safety labels are installed and legible.



Push the four 2-1/4" bolts through the pre-drilled holes located on the "OR" outside right ladder leg. You may need to tap head of bolts to knock out plastic.



Place washer over each bolt and start the 1/4-20 hex nut



Slide the bottom hinge bracket up on to the bolts and tighten securely.



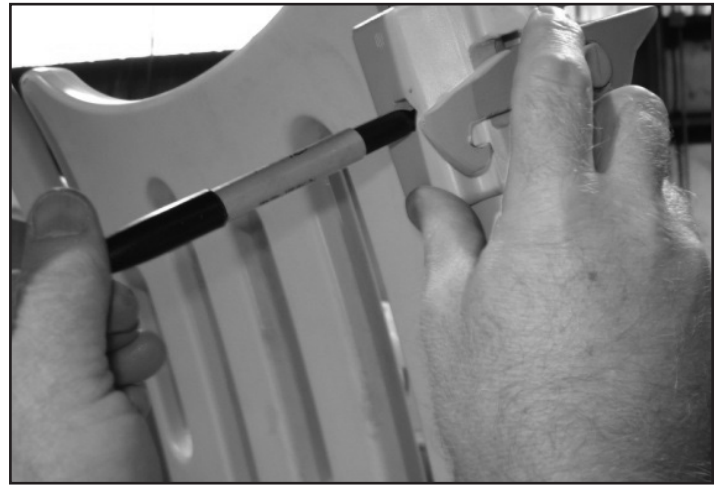
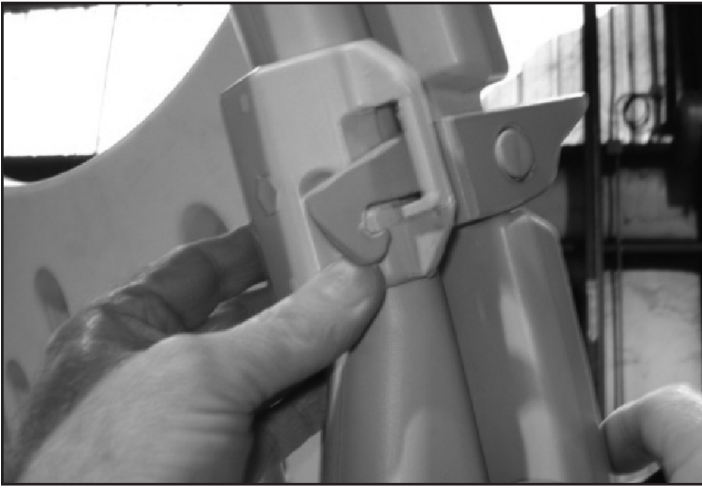
Slide the top hinge bracket on to the bolts as shown and tighten only enough to hold in place.



Place the gate on edge and carefully install latch using a rubber mallet. It may require several hits with rubber mallet.

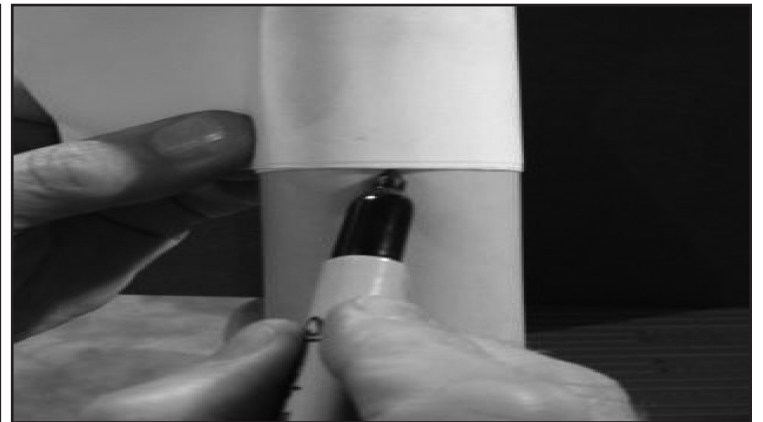
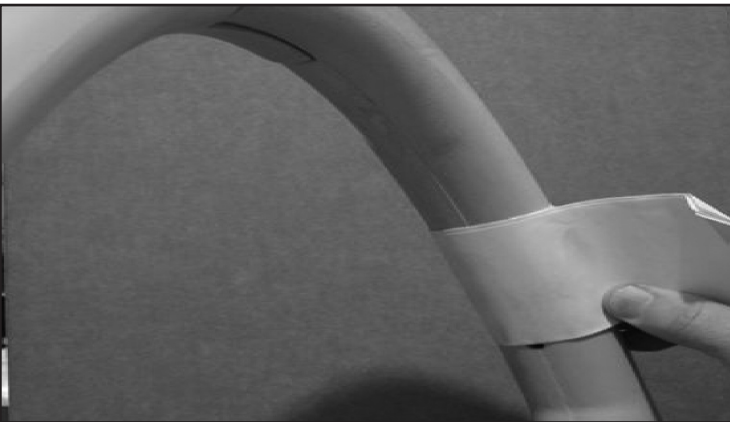


Place the lower gate hinge post in to the lower hinge bracket. Rotate the top hinge bracket up and over the top gate hinge post and tighten bolts.

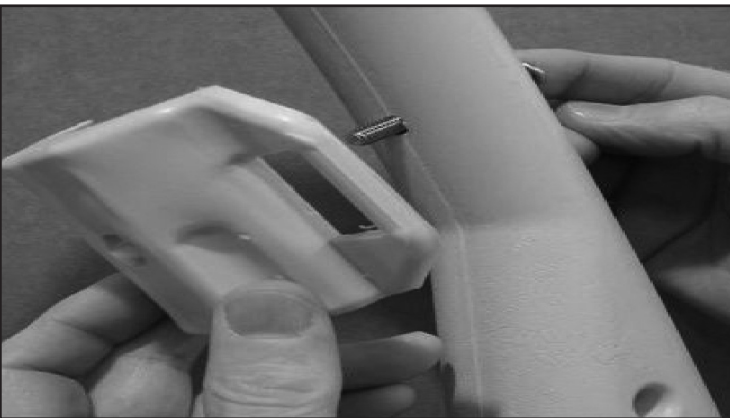


With the gate closed, position the latch plate so the latch rides over the lower edge of opening and drops down and hooks. Try opening/closing gate several times while holding latch plate in place. Reposition if necessary. Gate MUST latch when closed. Center the screw hole in latch plate over the mold line on ladder rail, mark position hole and drill through one side only of ladder handrail using 5/16" drill bit. DO NOT DRILL ALL THE WAY THROUGH LADDER RAIL.

WARNING! Using a corded drill near pool may result in electrocution.



To properly align the outer hole in the ladder rail tightly wrap a piece of paper around the rail so the bottom edge of paper bisects the centerline of drilled hole. Mark location where edge of paper bisects mold line on front of rail and drill using 5/16" drill.



Push 1/4-20 x 2-1/4 bolt through hole from front side of ladder, place hinge plate with 1/4- 20 hex nut over bolt and tighten. Thread the 1/4 plastic acorn nut onto the end of the bolt.

WARNING! Gate must be latched at all times and locked when pool is not in use

FIRST INSTALL THE 7200 GATE AS PER THE INSTRUCTIONS.

1. DRILL A 1/8" PILOT HOLE IN THE TOP RIGHT HAND CORNER OF THE SECOND TREAD. SEE FIGURE 1.
2. PLACE A 1/4" WASHER OVER THE #10 X 1-1/4" SCREW AND INSERT THROUGH THE OPEN LOOP AT THE END OF THE TENSION BAND. SEE FIGURE 2.
3. WITH THE GATE PARTIALLY OPEN [LEAVING SLACK IN THE CORD] INSTALL THE TENSION BAND ONTO THE TOP OF THE SECOND TREAD BY THREADING THE SCREW INTO THE PILOT HOLE. TIGHTEN USING A PHILLIPS SCREWDRIVER. SEE FIGURE 3.

WARNING! Using a corded drill near pool may result in electrocution.

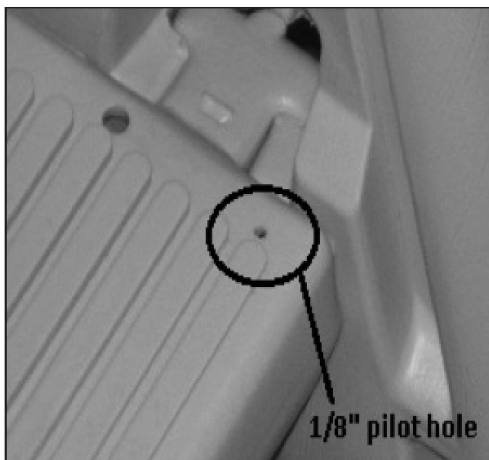


FIGURE 1



FIGURE 2



FIGURE 3

Safe Use

⚠ WARNING

To reduce the risk of drowning, entrapment, falls, paralysis, or other serious injury or death:

Use ladder properly.

- **When pool is in use, lock the ROLLGUARD® on the inside** of the pool ladder to prevent swimming through inside ladder treads. (See "To open ladder", p. 7. in 7200 instructions)
- **No diving or jumping from ladder** - shallow water; risk of paralysis or death.
- **FOR ENTRY/EXIT OF POOL, FACE THE LADDER AT ALL TIMES.**
- **ONE PERSON ON THE LADDER/STAIR AT A TIME.**
- To reduce the risk of entrapment or drowning, **DO NOT** swim through, behind or around ladder.
- Illuminate the ladder when using the pool at night.

Weight limit - 300 lbs maximum. Exceeding maximum weight may cause the ladder to fail.

Secure ladder when not in use. When pool is not in use, make sure gate is closed and locked.

Watch children at all times when they are in or around water to help prevent drowning.

BE SURE AND SAFE. The manufacturer **IS NOT** responsible for improper assembly, installation and use.

WINTERIZING: Unfasten the ladder from pool top seat and remove from the water. Remove the plugs and lay ladder on its side to drain. It will take several minutes for the water to drain out of the ladder rails and treads. A small amount of water left in ladder will not cause any damage. Replace the plugs so they won't get lost. To reinstall, see 7200 ladder instructions *Step 5: Placing ladder in pool.*

CONFER PLASTICS INC. FIVE YEAR WARRANTY

Confer Plastics Inc. warrants their swimming pool ladders and spa products to be free from defects in workmanship for five years from date of purchase.

DO NOT RETURN DEFECTIVE PART TO DEALER

E-MAIL CONFER PLASTICS AT: **LADDERS@CONFERPLASTICS.COM**

A PICTURE [S] OF DEFECTIVE PART, A BRIEF DESCRIPTION OF PROBLEM,
PROOF OF PURCHASE AND YOUR CONTACT INFORMATION.

INFORMATION MAY ALSO BE FAXED TO CONFER PLASTICS AT: **716-694-3102**
OR MAILED TO THE ADDRESS BELOW. UPON REVIEW OF THE INFORMATION YOU
WILL BE NOTIFIED IF PART IS COVERED UNDER THE WARRANTY AND
THE SHIPPING/HANDLING CHARGES.

This warranty gives you specific legal rights, and you may also have other rights which may vary from state to state.

Confer Plastics Inc.
97 Witmer Road
North Tonawanda, N.Y. 14120-2421

MADE IN THE U.S.A. by:



CONFER
plastics inc.

Printed in U.S.A.

97 Witmer Road
North Tonawanda, New York 14120-2421
Toll Free U.S. 800-635-3213
www.conferplastics.com

3-00-7200-G
7200-Gate-2-21